
THE MISSOURI & KANSAS



EPILEPSY REVIEW

Vol VI #2

July 2016

[Staff](#)

[Board of Directors](#)

[Professional Advisory Board](#)

Archives

[April 2016](#)

[June 2015](#)

[September 2014](#)

[May 2013](#)

[December 2012](#)

[September 2012](#)

[June 2012](#)

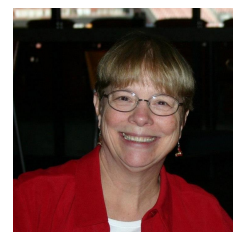
[September 2011](#)

[December 2011](#)

Executive Review

by Darla Templeton

My friend and colleague, Susan P. Escueta, often calls me while on her way to work, buzzing down the Pacific coast highway in LA. We catch up on the news in the affiliate network and share thoughts about life, epilepsy, research and ending epilepsy. [Read more](#)



Epilepsy and Social Security

by Deanna Power

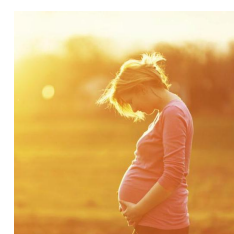
Epilepsy is reoccurring seizures. Social Security defines epilepsy in two categories: convulsive and non-convulsive. Around 60% of people living with epilepsy have complete or very good control with the treatments and medications available today. The remaining 40% struggle with control and the impact of epilepsy may be debilitating. [Read more](#)



Epilepsy and Pregnancy

If you or someone you love is a woman with epilepsy, then you may be wondering if motherhood is an option. The good news is that in most cases, the answer is yes. But not everyone is aware of the possibilities.

[Read more of the U.S. News and World Report article](#)



Calendar of Events

2016

August 6 [Seize the Day Walk to Remember Ambria Clinkscale](#)

St. Ferdinand Park, Florissant, MO

August 13 Trifon Panopoulos Memorial Golf Tournament

Normandie Golf Club, St. Louis, MO

call Louie at 314--202--8791

October 16 [Seize the Day Kansas City 5K Run/Walk](#)

Corporate Woods

2017

March 4 Victory Over Epilepsy St. Louis Gala
Missouri Athletic Club
April 1 Victory Over Epilepsy Kansas City Gala
Carriage Club

[Research Studies](#)
[Memorials & Tributes](#)

Epilepsy Foundation of Missouri & Kansas

An independently incorporated affiliate of the Epilepsy Foundation | 4406 St. Vincent St. Louis, MO 63119 | 314.781.4949
2340 E Meyer, Bldg. 1, Suite 300 B Kansas City, MO 64132 | 816.444.2800

The Epilepsy Foundation of Missouri & Kansas is a 501 (c) (3) tax exempt, non-profit organization. It is the policy of the Epilepsy Foundation of Missouri & Kansas to provide and promote equal opportunity for all people at all levels of the organization.

Mission

The mission of the Epilepsy Foundaiton is: To lead the fight to overcome the challenges of living with epilepsy and to accelerate therapies to stop seizures, find cures, and save lives.

EFMK provides services to people with seizures, their families and the community in Missouri & Kansas.

Editorial Policy

The Epilepsy Foundation of Missouri & Kansas requests that any EF affiliate or other organization wanting to reprint material from The Missouri & Kansas Epilepsy Review to please contact our office for permission. Email or call: Emily Swoboda - eswoboda@efmk.org or 314.781.4949. EFMK welcomes such requests.

The Missouri & Kansas Epilepsy Review is published three times each year by the Epilepsy Foundation of Missouri & Kansas.

