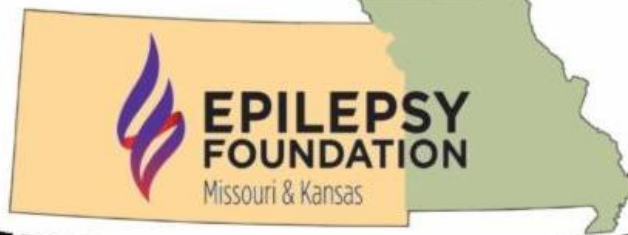


# THE MISSOURI & KANSAS



## EPILEPSY REVIEW

Vol. VI #3

December 2016

[Staff](#)

[Board of Directors](#)

[Professional Advisory Board](#)

### Archives

[July 2016](#)

[April 2016](#)

[June 2015](#)

[September 2014](#)

[May 2013](#)

[December 2012](#)

[September 2012](#)

[June 2012](#)

[September 2011](#)

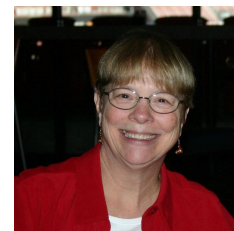
[December 2011](#)

### Executive Review

by Darla Templeton

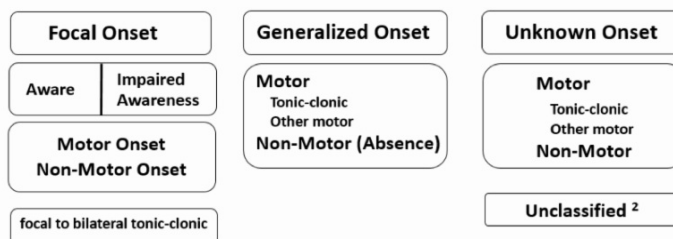
Joe comes by my office once a month. He is on his way down the hall to talk to Michelle, EFMK's Independent Living Coordinator. He is a man of few words, and, if I don't speak, he will just pass on by. If I greet him, he will be cordial. He may mumble, "It's cold out there." Or "People on the bus are crazy today." Just a comment. No more. Sometimes less.

[Read more](#)



### New ILAE Classification System for Seizures

ILAE 2017 Classification of Seizure Types Basic Version <sup>1</sup>



<sup>1</sup> Definitions, other seizure types and descriptors are listed in the accompanying paper & glossary of terms

<sup>2</sup> Due to inadequate information or inability to place in other categories

[Click for larger image](#)

The International League Against Epilepsy (ILAE) is the world's main scientific body devoted to the study of epilepsy, and it has recently revised its classification of seizures. The changes will help make diagnosing and classifying seizures more accurate and easier.

[Read more here.](#)

### GW Pharmaceuticals Releases Phase 3 Epidolex Research Results

GW Pharmaceuticals announced additional positive Epidiolex® (cannabidiol or CBD) Phase 3 data in poster presentations at the 70th Annual Meeting of the American Epilepsy Society. These data are from the positive pivotal Phase 3 study of Epidiolex in Dravet syndrome and the first pivotal Phase 3 study of Epidiolex in Lennox-Gastaut syndrome (LGS), both reported earlier this year. [Read full report here](#)



---

## Calendar of Events

2017

**March 4** Victory Over Epilepsy St. Louis Gala  
*Missouri Athletic Club*

**April 22** Victory Over Epilepsy Kansas City Gala  
*Carriage Club*

**April 8** [Springfield Seize the Day](#)  
*Jordan Valley Park*

**June 24** Seize the Day St. Louis  
*Kirkwood Park*

---

[Research Studies](#)  
[Memorials & Tributes](#)

### Epilepsy Foundation of Missouri & Kansas

An independently incorporated affiliate of the Epilepsy Foundation | 4406 St. Vincent St. Louis, MO 63119 | 314.781.4949  
2340 E Meyer, Bldg. 1, Suite 300 B Kansas City, MO 64132 | 816.444.2800

The Epilepsy Foundation of Missouri & Kansas is a 501 (c) (3) tax exempt, non-profit organization. It is the policy of the Epilepsy Foundation of Missouri & Kansas to provide and promote equal opportunity for all people at all levels of the organization.

#### Mission

The mission of the Epilepsy Foundation is: To lead the fight to overcome the challenges of living with epilepsy and to accelerate therapies to stop seizures, find cures, and save lives.

EFMK provides services to people with seizures, their families and the community in Missouri & Kansas.

#### Editorial Policy

The Epilepsy Foundation of Missouri & Kansas requests that any EF affiliate or other organization wanting to reprint material from The Missouri & Kansas Epilepsy Review to please contact our office for permission. Email or call: Emily Swoboda - [eswoboda@efmk.org](mailto:eswoboda@efmk.org) or 314.781.4949. EFMK welcomes such requests.

The Missouri & Kansas Epilepsy Review is published three times each year by the Epilepsy Foundation of Missouri & Kansas.





2014  
**REVIEWED**  
BY THE GREATER KANSAS CITY  
COMMUNITY FOUNDATION  
*[Click Here for a Detailed Profile](#)*